



J M GROUP

REAL SOLUTIONS

PLANNING

- i. Land Use/Master Planning
- ii. Re-Zoning
- iii. Planned Unit Developments (PUD)
- iv. Development of Regional Impact (DRI) Studies
- v. Design Charettes
- vi. Facility Master Planning
- vii. Estate/Plantation Master Plans
 1. Home Sites
 2. Water Features
 3. Habitat Enhancement
 4. Roads
 5. Silviculture



SITE ENGINEERING

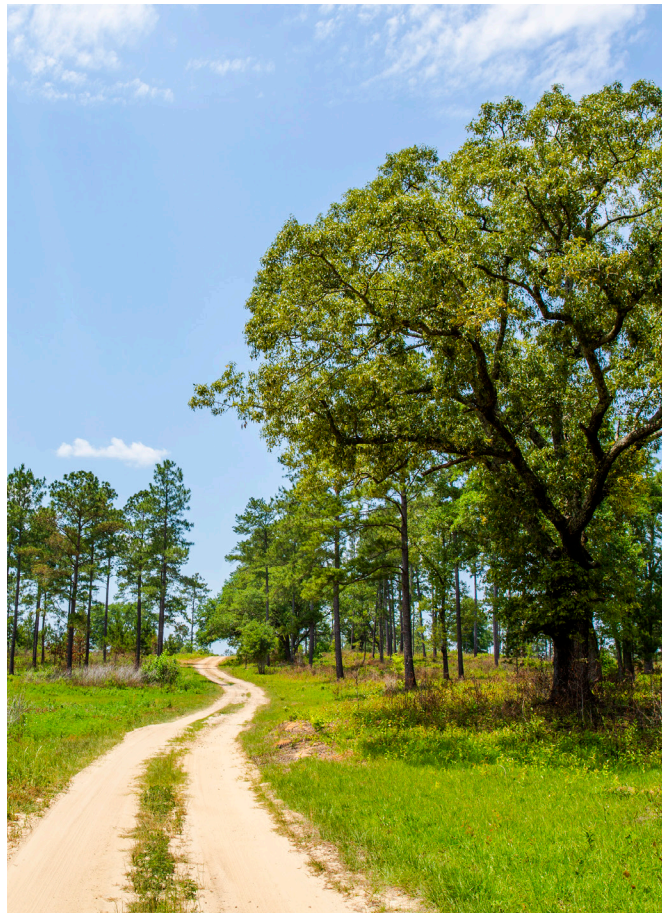
- i. Facility Planning
- ii. Site Grading
- iii. Drainage and Stormwater System Design
- iv. Water System Design
- v. Wastewater/Septic System Design
- vi. Sewer Design and Expansion
- vii. Tree Mitigation
- viii. Landscape Design
- ix. Low Impact Development/LEED
- x. Site Development Planning and Reviews
- xi. Environmental Resource Permitting
- xii. Other Construction Related Permitting

RESIDENTIAL DEVELOPMENT

- i. Land Use/Master Planning
- ii. Roadway Design
- iii. Drainage and Stormwater System Design
- iv. Utility Design
- v. NPDES/Erosion, Sedimentation, and Pollution Control (ES&PC) Plans
- vi. Flood Compensation Studies
- vii. Sustainable Development Design
- viii. Construction Engineering Inspection
- ix. NPDES Sampling, Inspections, and Reporting

ROADWAY DESIGN

- i. Transportation Planning & Studies
- ii. Roadway Design/Widening/Realignment
- iii. Stormwater/Drainage Design
- iv. Sidewalk/Pedestrian Facilities Design
- v. Utility Design
- vi. Roadway Permitting
- vii. Streetscape Design
- viii. NPDES/Erosion, Sedimentation, and Pollution Control (ES&PC) Plans
- ix. Right-of-Way Acquisition
- x. Construction Engineering Inspection
- xi. NPDES Sampling, Inspections, and Reporting



AGRICULTURAL

- i. Phase 1 Environmental Site Assessments
- ii. Wetland Delineation and Permitting
- iii. Spill Prevention, Control and Countermeasure Plan Preparation
- iv. Wastewater Permitting
- v. Air Permitting
- vi. Land Application System Design

ENVIRONMENTAL

- i. Phase I Environmental Site Assessments (ESA)
- ii. Ecology Studies
- iii. Wetland Ecology Report Preparation
- iv. Wetland Delineation and Permitting
- v. Environmental Resource Permitting
- vi. Environmental Audits, Assessments and Compliance Plans
- vii. Erosion, Sedimentation and Pollution Control Plans (ESPCP)
- viii. NPDES Stormwater Permitting, Inspections and Monitoring
- ix. Stormwater Pollution Prevention Plan Preparation
- x. Spill Prevention, Control and Countermeasure Plan Preparation
- xi. Construction Stormwater NPDES Inspections
- xii. Industrial Stormwater NPDES Inspections
- xiii. Turbidity Sampling/Testing

CONSTRUCTION

- i. Contract Management
- ii. Civil Construction Cost Estimation
- iii. Bidding
- iv. Civil Construction Management
- v. Construction Engineering Inspection
- vi. NPDES Permitting, Inspections, and Monitoring

WATER

- i. Master Planning
- ii. Water Transmission / Distribution Design

WASTEWATER

- i. Municipal and Industrial Sewer System Design and Permitting
- ii. Septic System Design and Permitting
- iii. Pump Station Design
- iv. Municipal/Industrial Wastewater Treatment Plant/Land Application System Design
- v. Hydraulic Studies
- vi. Master Planning
- vii. Collection/Transmission Rehabilitation Design

STORMWATER

- i. Municipal/Industrial Master Planning
- ii. Water Quality & Hydrologic Investigations
- iii. Stormwater Modeling
- iv. Municipal/Industrial Stormwater Management System Design and Permitting
- v. Stormwater Pollution Prevention Plan (SWPPP/SW3P) Preparation
- vi. Construction Stormwater NPDES Permitting, Inspections and Monitoring
- vii. Industrial Stormwater NPDES Permitting, Inspections and Monitoring
- viii. Municipal NPDES Permitting
- ix. Low Impact Development/LEED
- x. Environmental Resource Permitting

